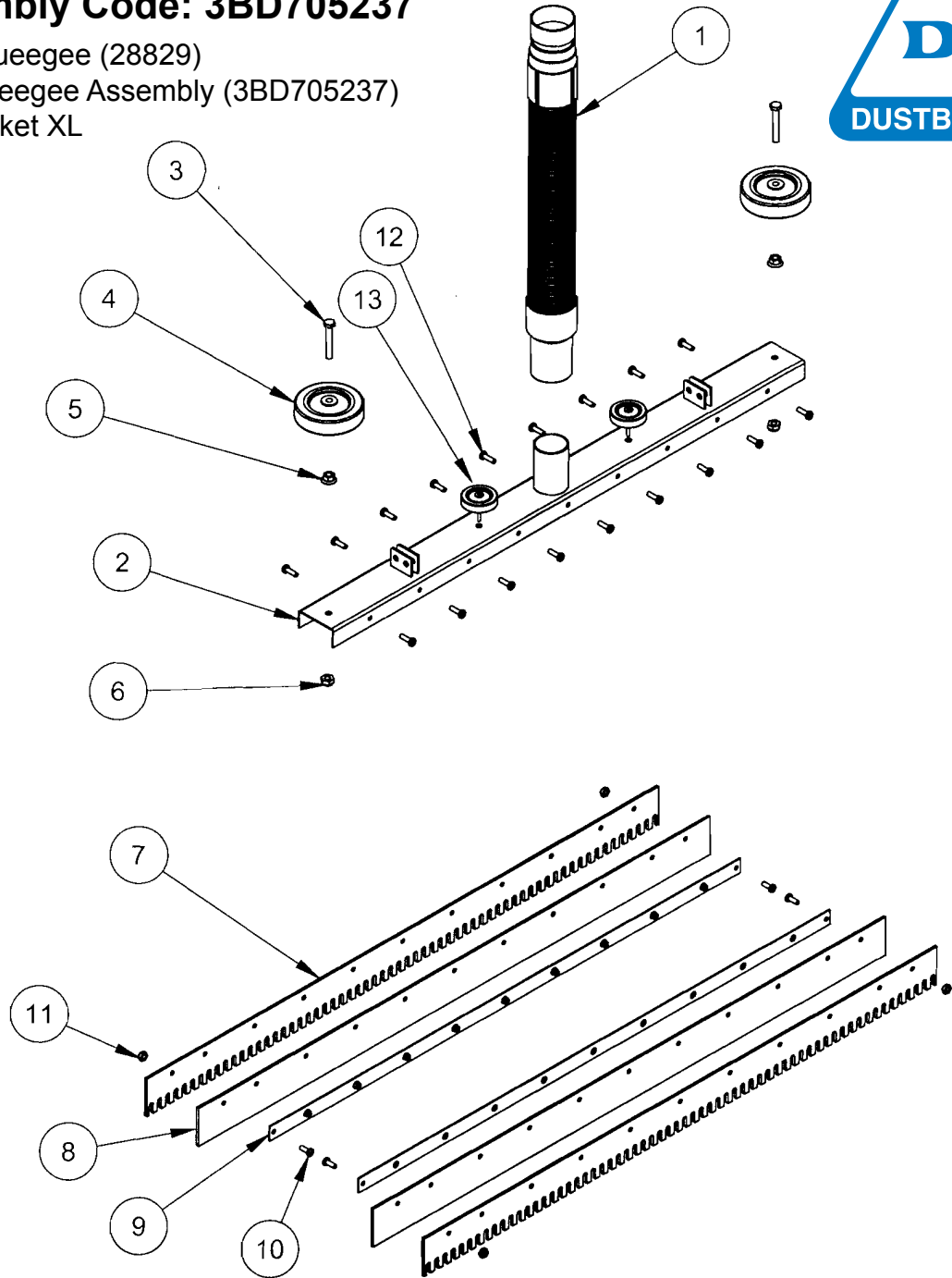


Squeegee Assembly Code: 3BD705237

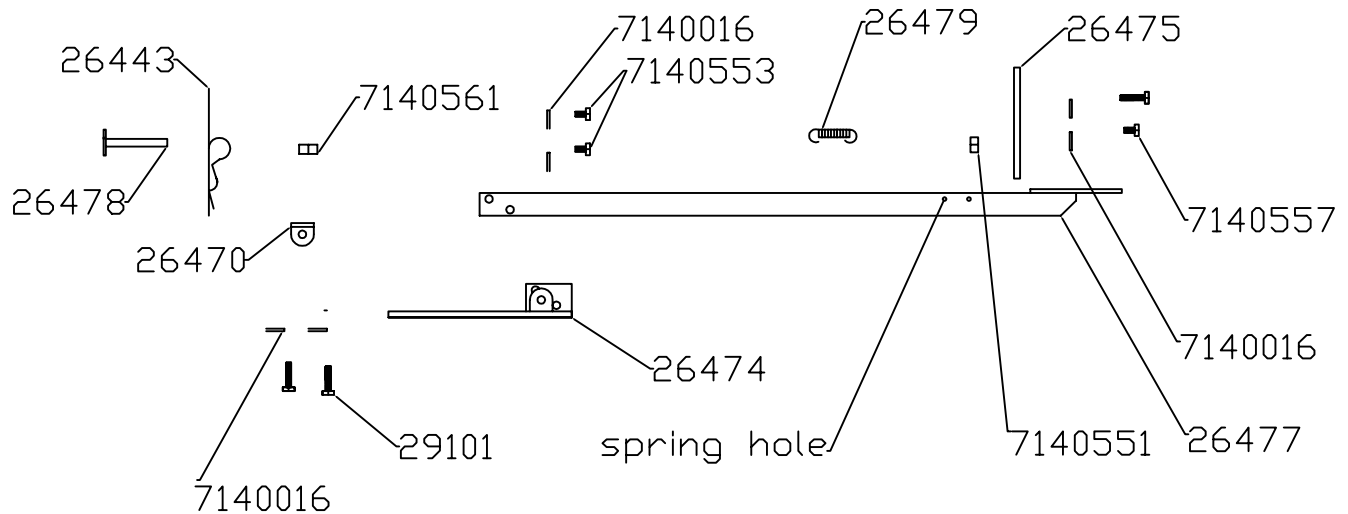
The Front Mounted Squeegee (28829) is composed of the Squeegee Assembly (3BD705237) and the Squeegee Bracket XL



Position	Part Number	Description	Qty.
1	26262M	Hose Assembly	1
2	3BD715508	Housing	1
3	3BD735608	Bolt, Guide Wheel, 1/4-20 x 1.75"L.	2
4	3BD735607	Guide Wheel	2
5	3BD735611	Jam Nut, 1/4-20 serrated flanged	2
6	3BD735609	Nylock Nut, 1/4-20	2
7	3BD735602	Slotted Blade	2
8	3BD735601	Solid Blade	2
9	3BD715509	Blade Support	2
10	3BD735604	Blade End Screw, 10-32 x 1/2"L, SS	4
11	3BD735605	Blade End Screw Nut, 10-32, Nylock	4
12	3BD735603	Blade Attachment Screw, 10-32 x 5/8"L SS	18
13	20582M	Holding screw	2

Squeegee Bracket XL

The Front Mounted Squeegee (28829)
is composed of the Squeegee Assembly (3BD705237)
and the Squeegee Bracket XL



PARTS LIST

ITEM	DESCRIPTION	QTY REQ
26443	HITCH PIN CLIP SS1	1
26470	SQG BRACKET -HINGE PLD	1
26474	SQG BKT - MOUNT PLD	1
26475	SQG BKT - PLATE PLD	1
26477	SQG BKT - PEDAL PLD	1
26478	SQG BKT - CLEVIS 1	1
26479	SQG BKT - SPRING 1	1
29101	3/4" X 1/4"20S/H/C/S	2
29102	3/16" ALLEN KEY	1
7140016	WASHER LCK. SS4	6
7140553	BOLT 1/4"20 HXHDCPS/S	2
7140550	BOLT 1 1/4"X20HXDCPS/S	1
7140551	NUT 1/4"X20 SS4	1
7140557	BOLT 3/4"X1/4"X20HXHDS/S	1
7140561	NUT 5/16" X1/4" S/S	2