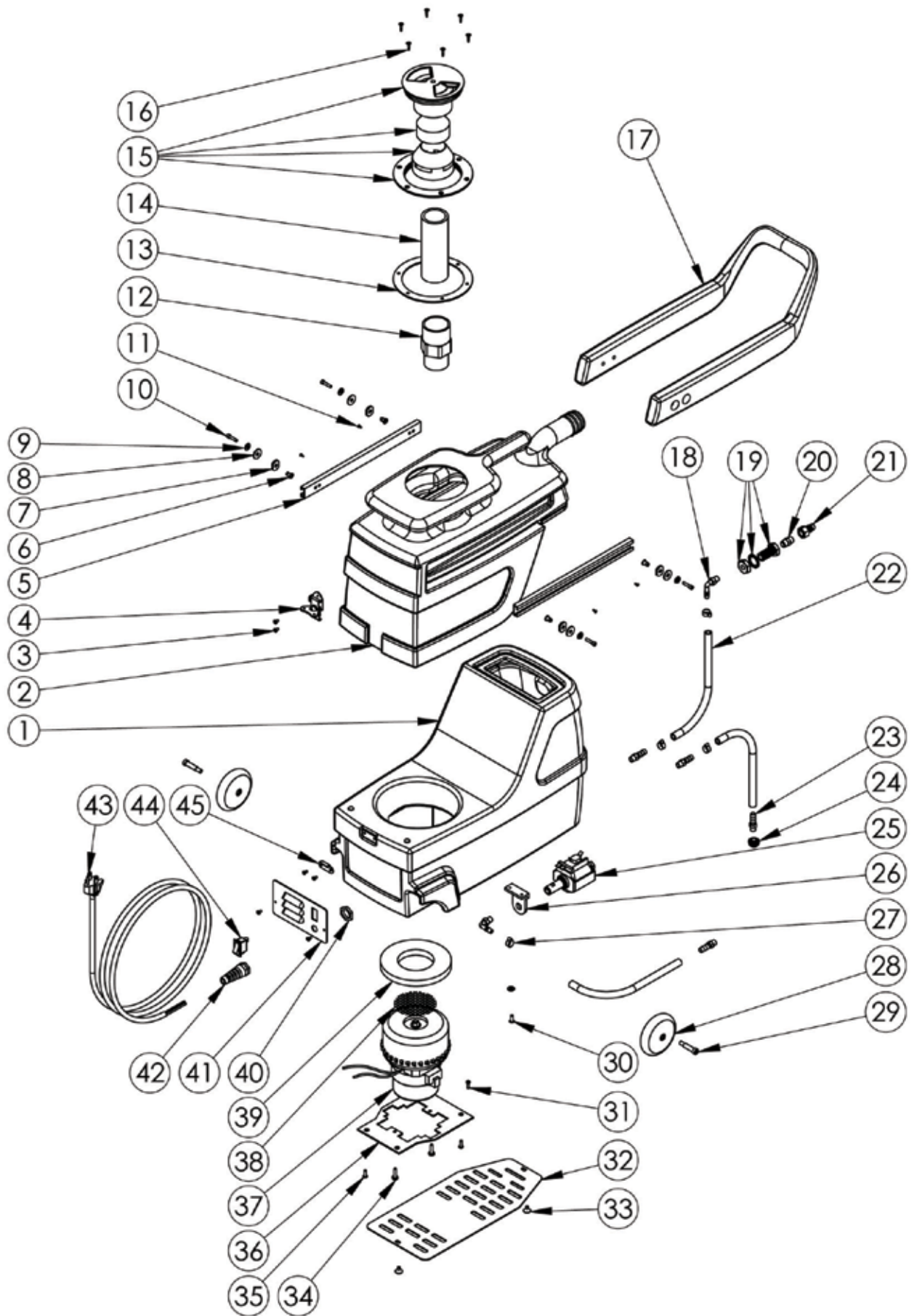


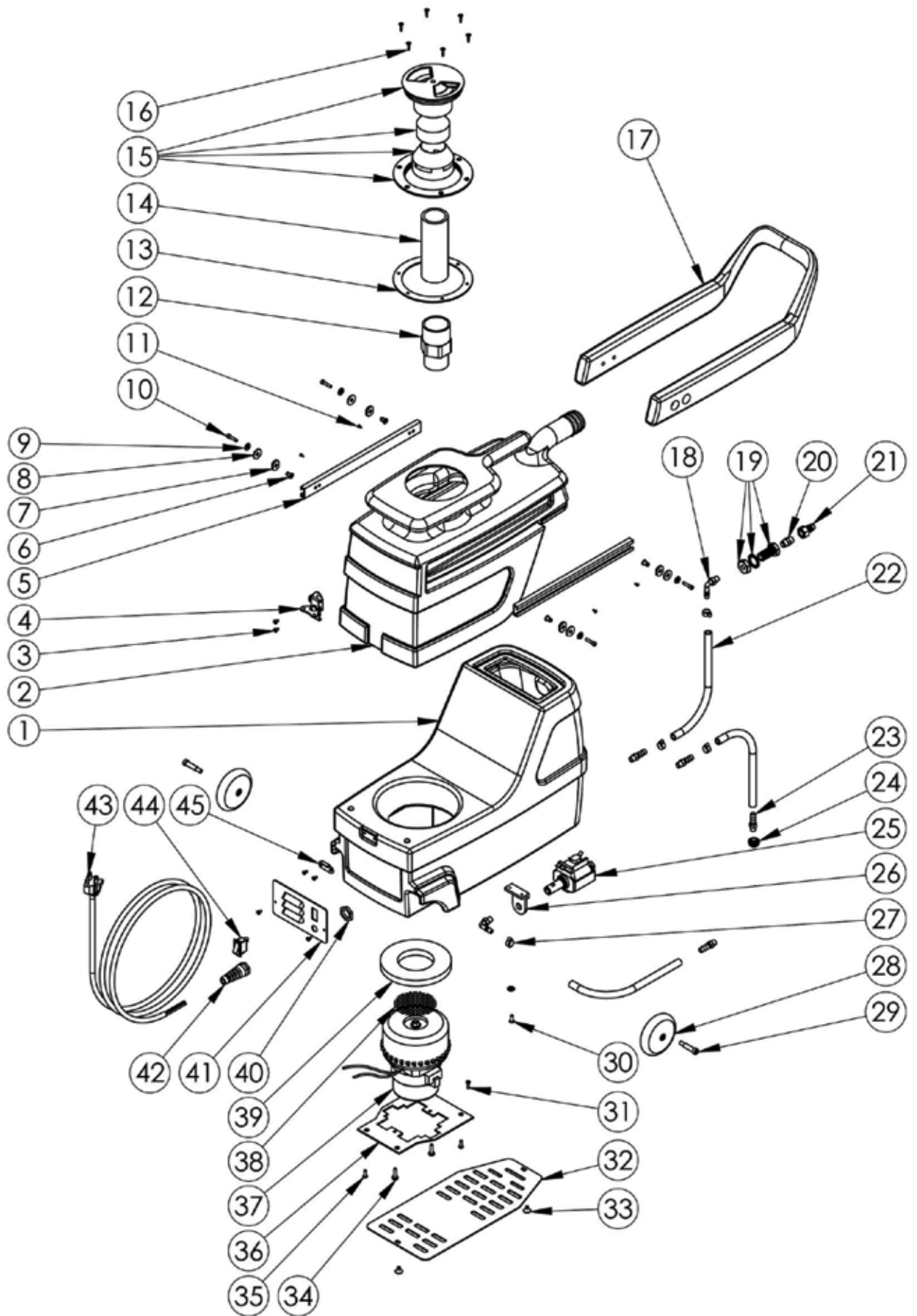
Parts - Pièces



19384
Mini Spotter

| Part N. | Description | Quantity | Drawing N. |
|------------|-------------------------------|----------|------------|
| S10-350-D | 3-Gallon Solution Tank - Blue | 1.00 | 1 |
| S10-0351-D | 3-Gallon Recovery Tank - Blue | 1.00 | 2 |
| S10-0383 | 6-32 x 1/4" Phil Pan Screw | 6.00 | 3 |
| S10-0400-D | Latch | 1.00 | 4 |
| S10-0412 | C-Channel Handle | 2.00 | 5 |
| S10-0414 | Rivet Handle | 4.00 | 6 |
| S10-0384 | .125 Thick Nylon Washer | 4.00 | 7 |
| S10-0385 | .06 Thick Nylon Washer | 4.00 | 8 |
| S10-0074 | Flat Washer #8 SAE | 5.00 | 9 |
| S10-0216 | Allen Head Screw for Backpack | 4.00 | 10 |
| S10-0379 | 8-32 x 3/8" Screw | 4.00 | 11 |
| S10-0405 | 1-1/2" PVC SCH40 Slip Thread | 1.00 | 12 |
| S10-0302-A | Hatch Cover Gasket | 1.00 | 13 |
| S10-0416-A | 1-1/2" Black ABS Stand Pipe | 0.60 | 14 |
| S10-0304 | Cap and Float Assembly | 1.00 | 15 |
| S10-0419 | Screw Hatch | 6.00 | 16 |
| SP-3-H-BLK | 3-Gallon Black Handle | 1.00 | 17 |
| S10-0406 | Nylon Barb 90 1/8" NPT 1/4" | 2.00 | 18 |
| S80-0017-2 | Bulk Head fitting | 1.00 | 19 |
| S10-0403 | 1/8" Brass Female Coupler | 1.00 | 20 |
| S10-0402 | 1/8" Male QD | 1.00 | 21 |
| S10-0434 | Threaded Hose | 2.50 | 22 |
| S10-0407 | 1/8" Strait Nylon Barb NPT | 4.00 | 23 |
| S10-0845-2 | 1/8" Strainer | 1.00 | 24 |
| S10-0300 | 55 psi Pump | 1.00 | 25 |
| S10-0301 | L Bracket | 1.00 | 26 |
| S10-0435 | Oetiker Clamp | 4.00 | 27 |
| S10-0303 | Roller Blade Wheel | 2.00 | 28 |
| S10-0387 | 5/16" x 1" Wheel Bolt | 2.00 | 29 |
| S10-0022 | Shoulder and Waist Belt Screw | 1.00 | 30 |
| S10-0017 | Deflector Screw | 1.00 | 31 |
| S10-1028 | Bottom Base Plate | 1.00 | 32 |
| S10-0492 | Screw for Plates on Spotter | 2.00 | 33 |
| S10-0014 | Motor Screw | 2.00 | 34 |
| S10-0380 | 10-32 x 3/8" Screw | 2.00 | 35 |
| S10-1024 | Motor Mount Plate | 1.00 | 36 |
| S10-0354 | 3-Gallon Motor | 1.00 | 37 |
| S10-0386 | Stamped Motor Screen | 1.00 | 38 |
| S10-1030 | Motor Gasket | 1.00 | 39 |

Parts - Pièces



19384
Mini Spotter

| Part N. | Description | Quantity | Drawing N. |
|----------------|-----------------------|-----------------|-------------------|
| S10-0027-A | Strain Relief Nut | 1.00 | 40 |
| - | N/A | 1.00 | 41 |
| S10-0027 | Pigtail Strain Relief | 1.00 | 42 |
| S10-0448 | 20-Foot Cord | 1.00 | 43 |
| S10-0025 | On/Off Switch | 2.00 | 44 |
| S10-0400-C | Keeper Latch | 1.00 | 45 |