

Parts Manual

Manuel de pièces

2019-09

Gladiator 664

Sweepers / Balyeuses

Code: 19680



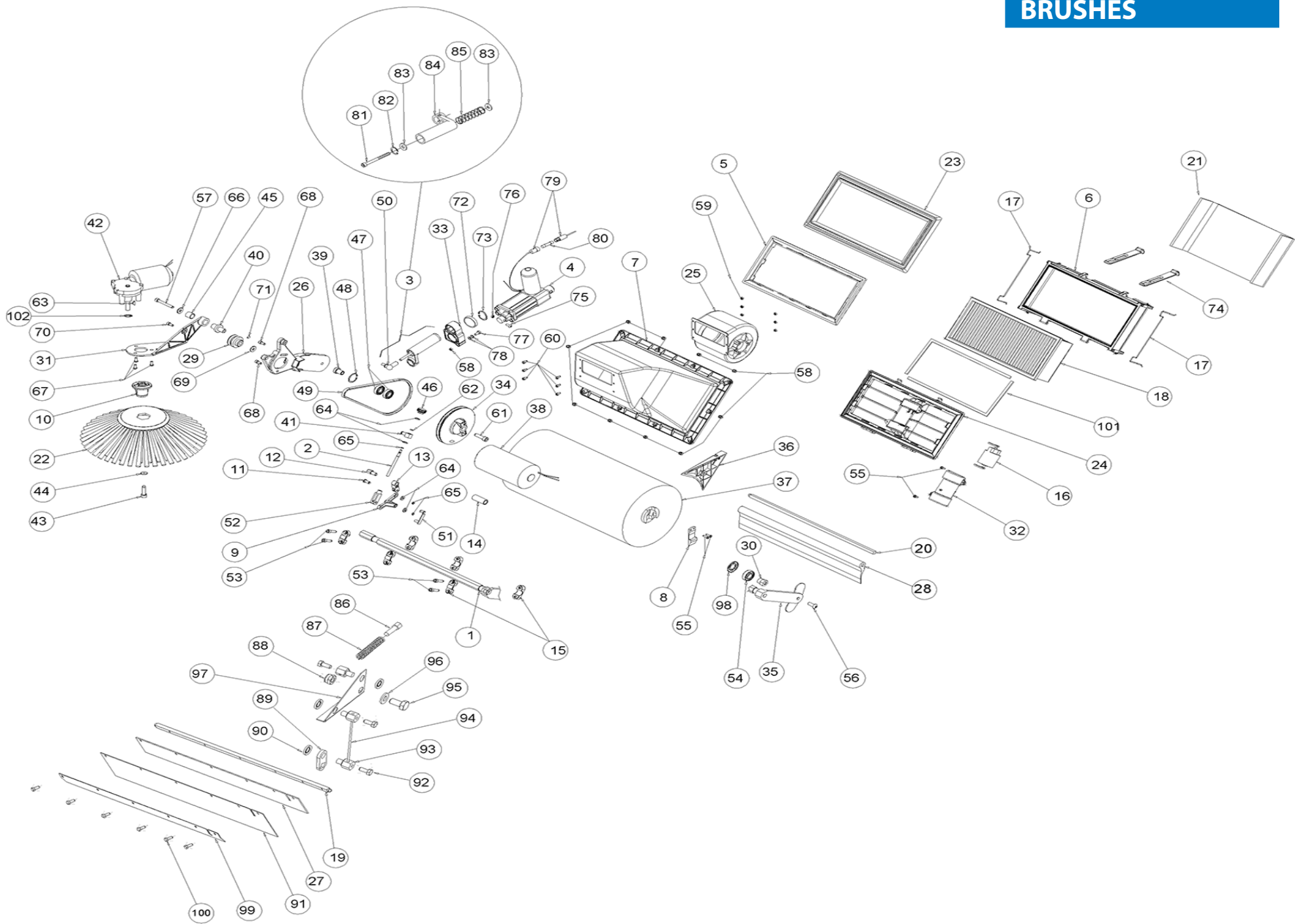
Serial Number / Numéro de série :

Date of Purchase / Date d'achat :

Distributor Name / Nom du distributeur :

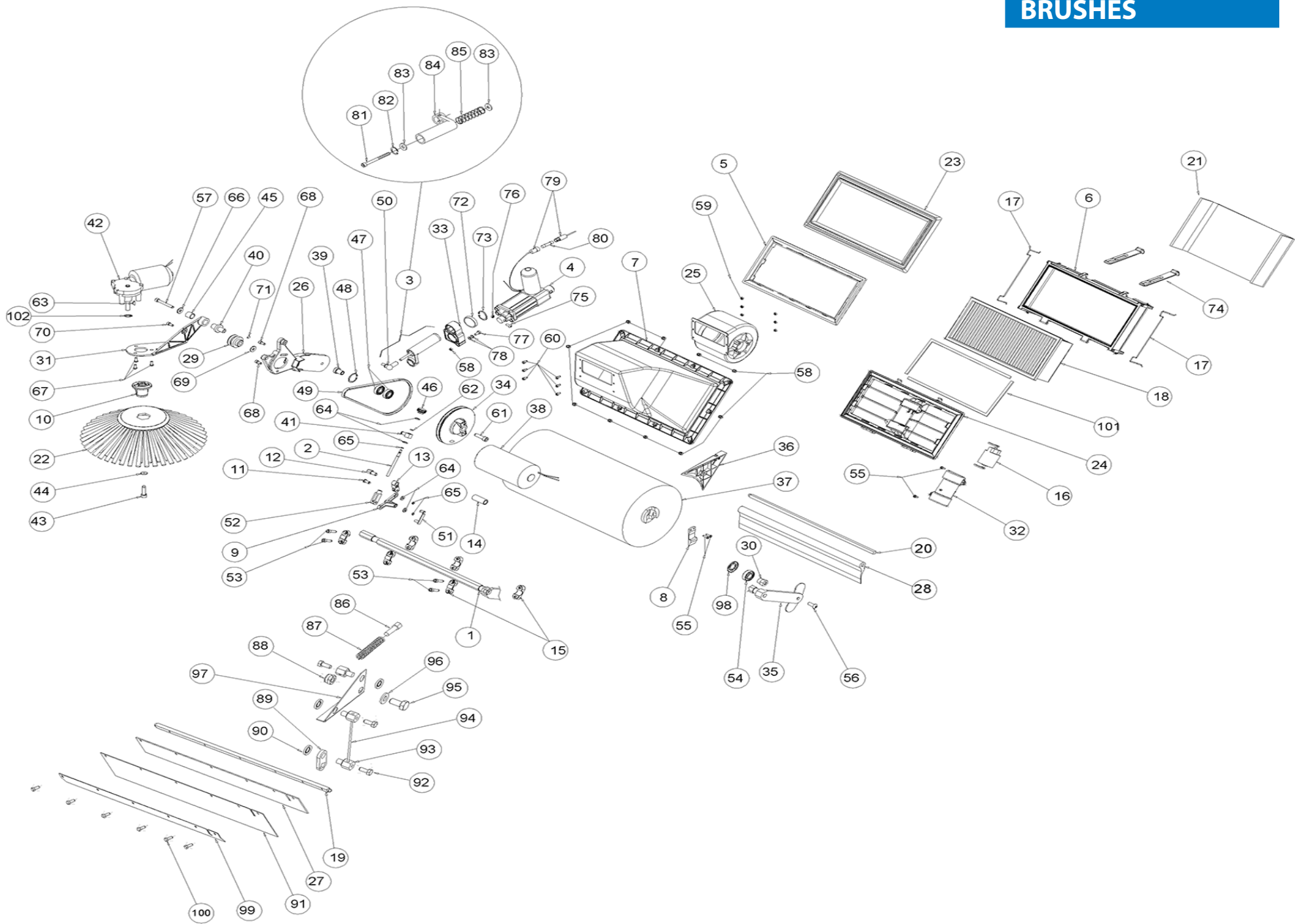


BRUSHES



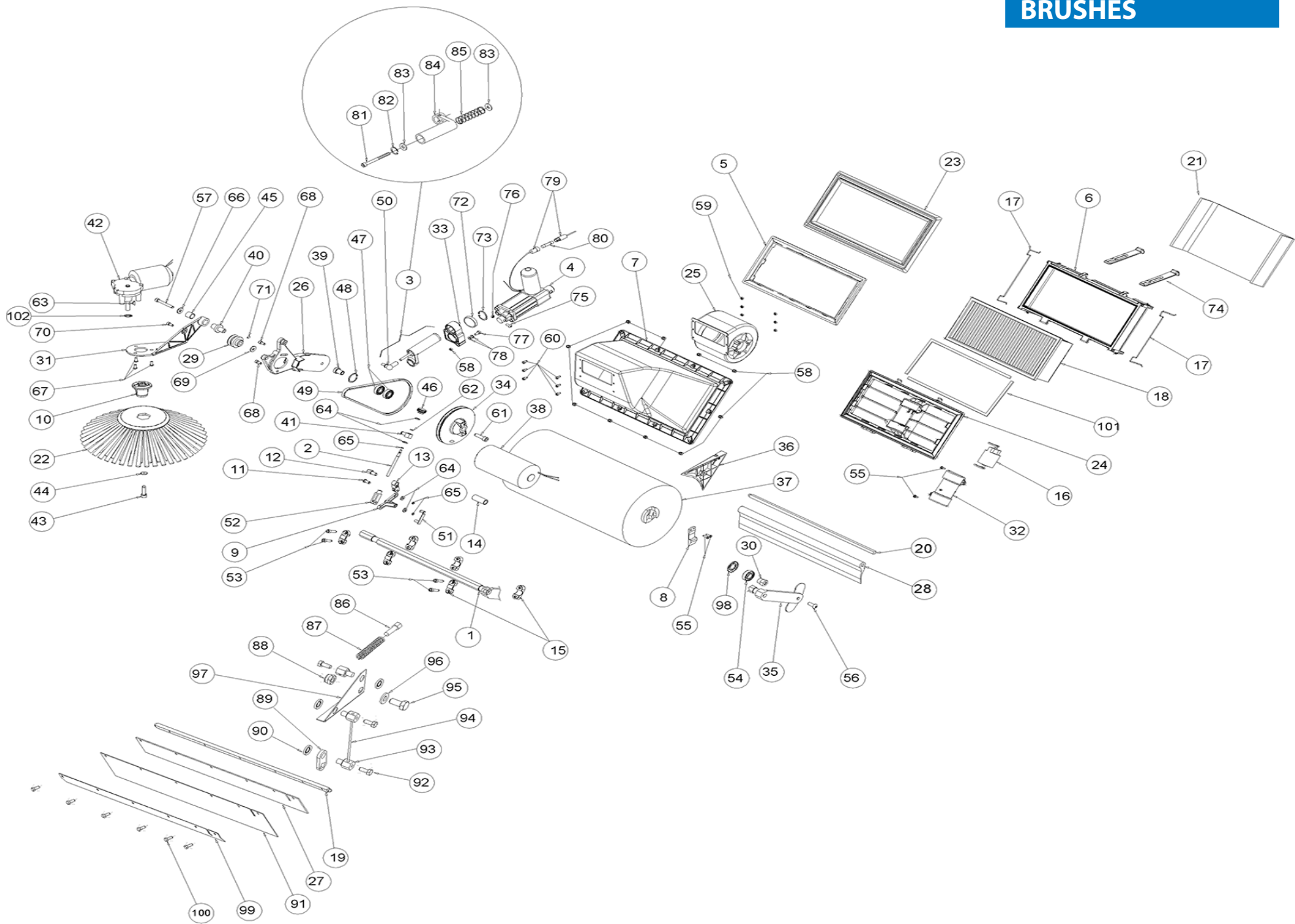
Ref.	Part N.	Alt. Part N.	Description	Quantity	Validity From	Validity To
1	3ALTR00076		SHAFT CENTRAL BRUSH	1		
2	3ALTR00042		ROD ADJUSTER	1		
3	3PMVR00438		GUIDE ASSEMBLY	1		
4	3MOCC00034		ACTUATOR CENTRAL BRUSH 464-664	1		
5	3MPVR00918		PLATE FRAME FILTER	1		
6	3MPVR00919		FRAME FILTER	1		
7	3MPVR00920		CASING FAN	1		
8	3PMVR00333		BRUSH HOOKING LEVER - 464	1		
9	3MPVR00934		ARM DRIVING SIDE BRUSH	1		
10	3MPVR01707		HUB SIDE BRUSH DRIVE	1		
11	3MPVR00932		PIN	1		
12	3LAFN01227		PIN, ARM DRIVING	1		
13	3MPVR00916		CONNECTING ROD	1		
14	3LAFN01221		SPACER FRONT FLAP	1		
15	3MPVR00807		SUPPORT SHAFT MAIN BRUSHN (SET OF 2)	3		
16	3MOCC00035		MOTOR FILTER SHAKER 464	1		
17	3MLML00040		RETAINER PREFILTER SPRING FOR 464	2		
18	3FTDP00013		FILTER PAPER 464	1		
19	3LAFN07182		PIN	1		
20	3LAFN07437		PIN REAR FLAP 664	1		
21	3FTDP00014		PRE-FILTER -FOR 464	1		
22	3SPPV00303		BRUSH SIDE 464	1		
23	3MPVR00931		GASKET FILTER	1		
24	3MPVR00933		FRAME SHAKER	1		
25	3MOCC00036		BLOWER FAN MOTOR 464	1		
26	3MFVR00025		ARM, BRUSH, MAIN	1		
27	3MPVR05454		FLAP	1		
28	3MPVR05333		FLAP 664	1		
29	3MTPL00038		PULLEY CENTRAL BRUSH MOTOR	1		

BRUSHES



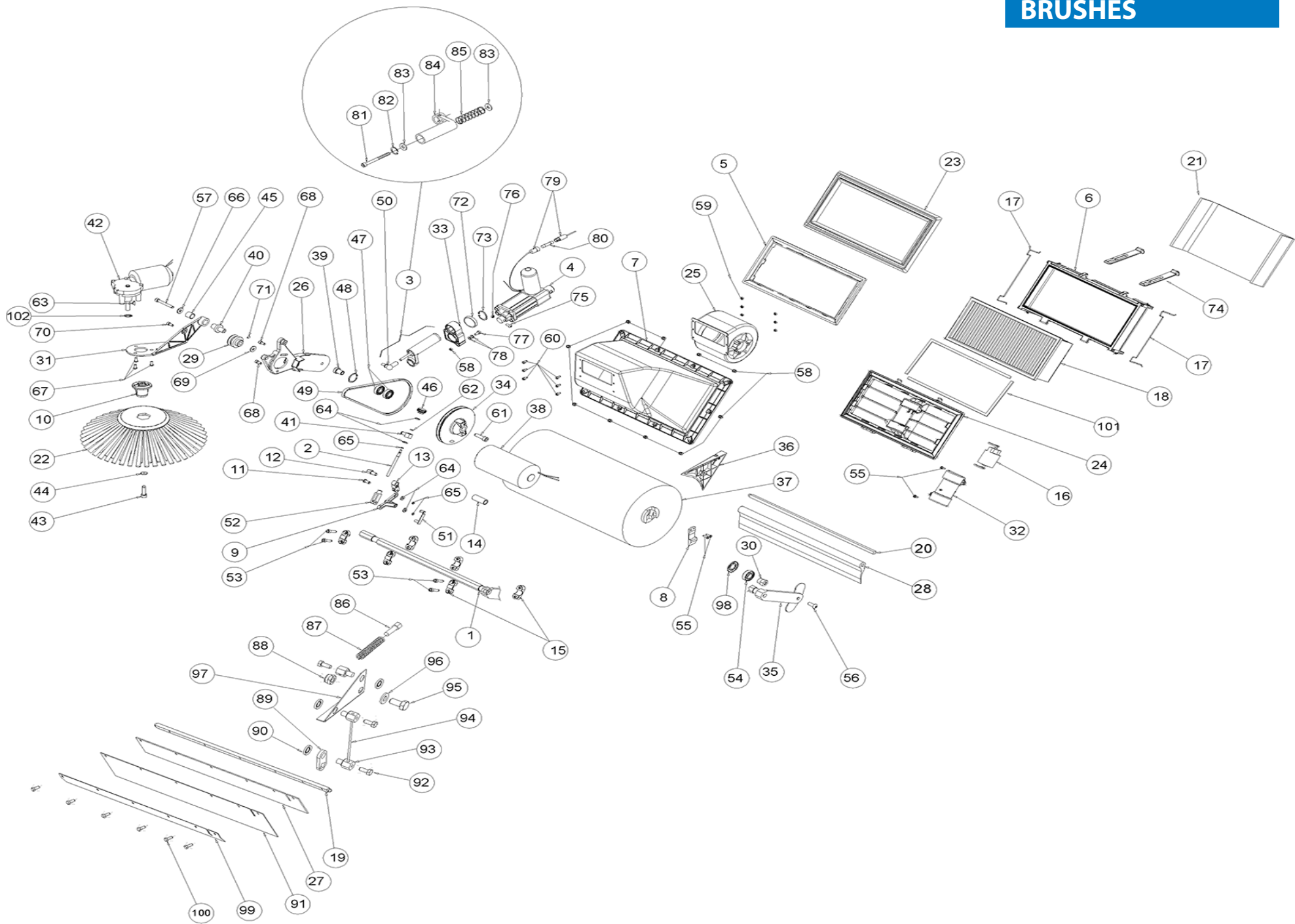
Ref.	Part N.	Alt. Part N.	Description	Quantity	Validity From	Validity To
31	3LAFN15263		ARM SIDE BRUSH	1		
32	3MPVR00925		COVER MOTOR SHAKER	1		
33	3MPVR00943		SPRING GUIDE	1		
34	3MTPL00039		PULLEY CENTRAL BRUSH CONTROL	1		
35	3MFVR00026		ARM CENTRAL BRUSH LEFT SIDE	1		
36	3MPVR00940		CONVEYOR	1		
37	3SPPV01226		BRUSH 664	1		
38	3MOCC00033		MOTOR CENTRAL BRUSH 464	1		
38	3MEVR01660		CARBON BRUSHES MOTOR FOR 3MOCC00033	2		
39	3LAFN01229		PIN CENTRAL BRUSH PULLY	1		
40	3LAFN01228		PIN SIDE BRUSH ROTATION ARM	1		
41	3LAFN01220		JOINT SIDE BRUSH ADJUSTMENT	1		
42	3MOCC00037		MOTOR SIDE BRUSH 464	1		
42	3MEVR86071		CARBON BRUSH FOR MOTOR 3MOCC00037	2		
42	3MTIG00002		GEAR MOTOR	1		
43	3VTVT29884		SCREW HH UNI 5739 4X16 ZC	1		
44	3VTRS05904		WASHER UNI 6592 4X16 ZC	1		
45	3LAFN06774		BUSHING GLYCODUR PG 14-16-15F	1		
46	3VTVR00303		KNOB V1/30/BFC-M5	1		
47	3CUVR46942		BALL BEARING 6001-2RS1 -SKF	2		
48	3VTAE00010		CIRCLIP DIN 472 D.28	1		
49	3MTCG00019		BELT BRUSH	1		
50	3VTVR45280		TOGGLE-JOINT M 6	1		
51	3CMCV00009		CLIP ARM UNI 1676	1		
52	3CMCV00006		FORK UNI 1676 M6X24	1		
53	3VTVT06237		SCREW SHCS UNI 5931 6X20 ZC	4		
54	3CUVR00164		BEARING 6002RS -SKF-	1		
55	3VTVT00099		SCREW STS UNI 6954 3,9X13	2		
56	3VTVT87271		SCREW SHCS ISO 7380 8X16 ZC	1		

BRUSHES



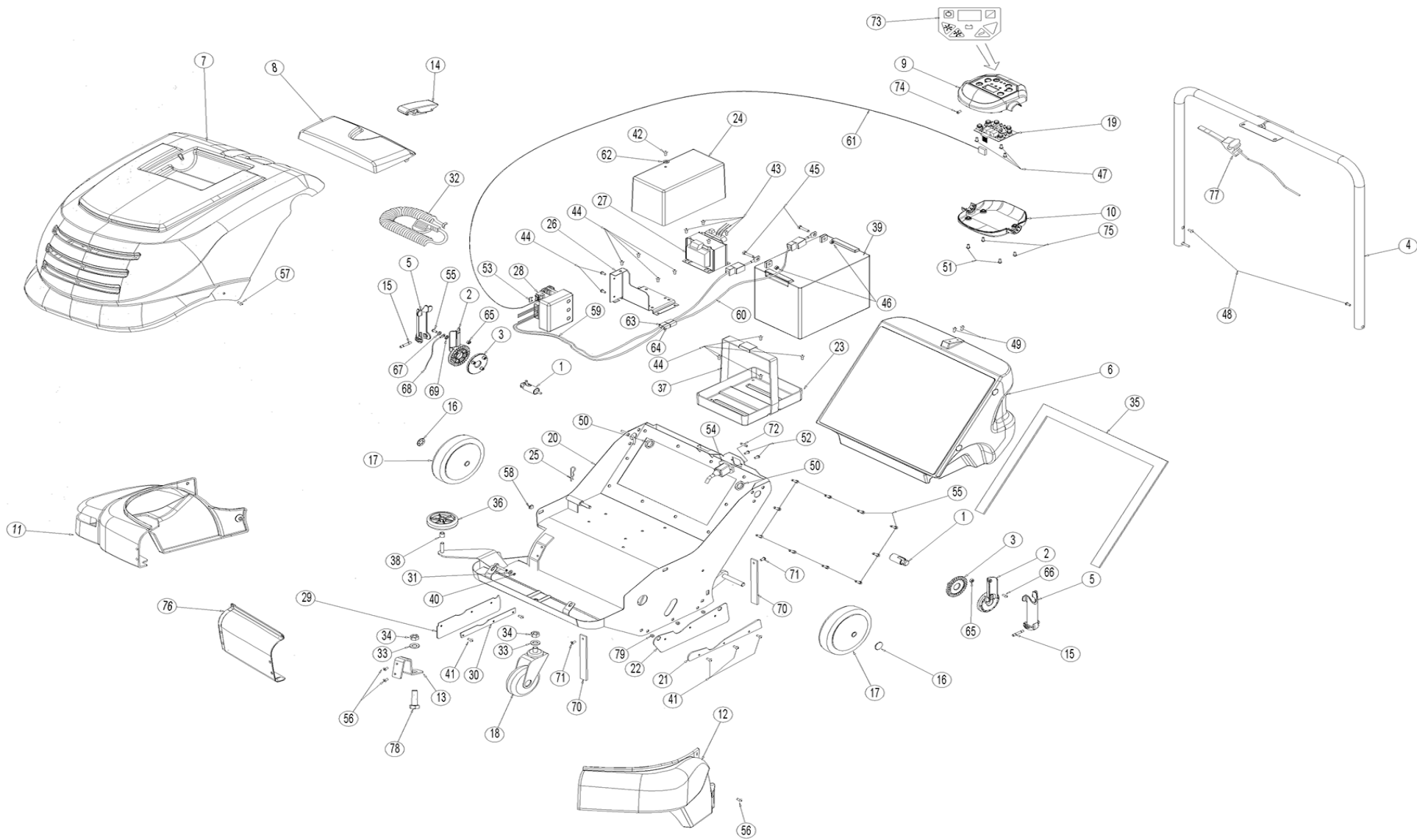
Ref.	Part N.	Alt. Part N.	Description	Quantity	Validity From	Validity To
57	3VTVT00063		SCREW SHCS UNI 5931 6X50 ZC	1		
58	3VTDD00017		NUT NYL DIN 985 M5	12		
59	3VTDD00009		NUT NYL DIN 985 M4	6		
60	3VTVT00003		SCREW HH M4X12 ZC UNI 5739	6		
61	3VTVT01354		SCREW SHCS UNI 5931 8X35 ZC	1		
62	3GUGO00288		GASKET ORING	1		
63	3VTVR75730		KEY UNI 6606 3X3,7	1		
64	3VTRS00011		WASHER UNI 6592 6X12 ZC	4		
65	3VTAE48552		CIRCLIP DIN 471 D.6	3		
66	3VTRS63242		WASHER UNI 6593 6X24X2 ZC	1		
67	3VTVT62920		SCREW HH 6X16 ZC	3		
68	3VTVT00005		SCREW HH 5X12 ZC	1		
69	3LAFN01186		SPACER 0,3	1		
70	3VTVT00005		SCREW HH 5X12 ZC	1		
71	3VTVT00989		GRUB SCREW 4X8	1		
72	3LAFN06775		SPACER	1		
73	3VTAE09655		CIRCLIP DIN 471 D.25	1		
74	3MPVR04648		LATCH RUBBER FILTER - 464	2		
75	3VTVT00245		SCREW HH M6X30 UNI 5739	1		
76	3VTDD00010		NUT NYL DIN 985 M6	1		
77	3VTVT12041		SCREW	2		
78	3VTRS00010		WASHER UNI 6592 5X10 ZC	2		
79	3MECB00925		CABLE ACTUATOR CONNECTION W/FUSE HOLDER	1		
80	3MEVR00150		FUSE 2.5 A 250V 5X20	1		
81	3VTVT37013		SCREW HH M6X100 UNI 5737	1		
82	3VTAE00009		CIRCLIP DIN 472 D.20	1		
83	3LAFN00124		BUSHING	2		
84	3LAFN01238		PLASTIC GUIDE ONLY, ACTUATOR	1		
85	3MLML45281		SPRING	1		

BRUSHES



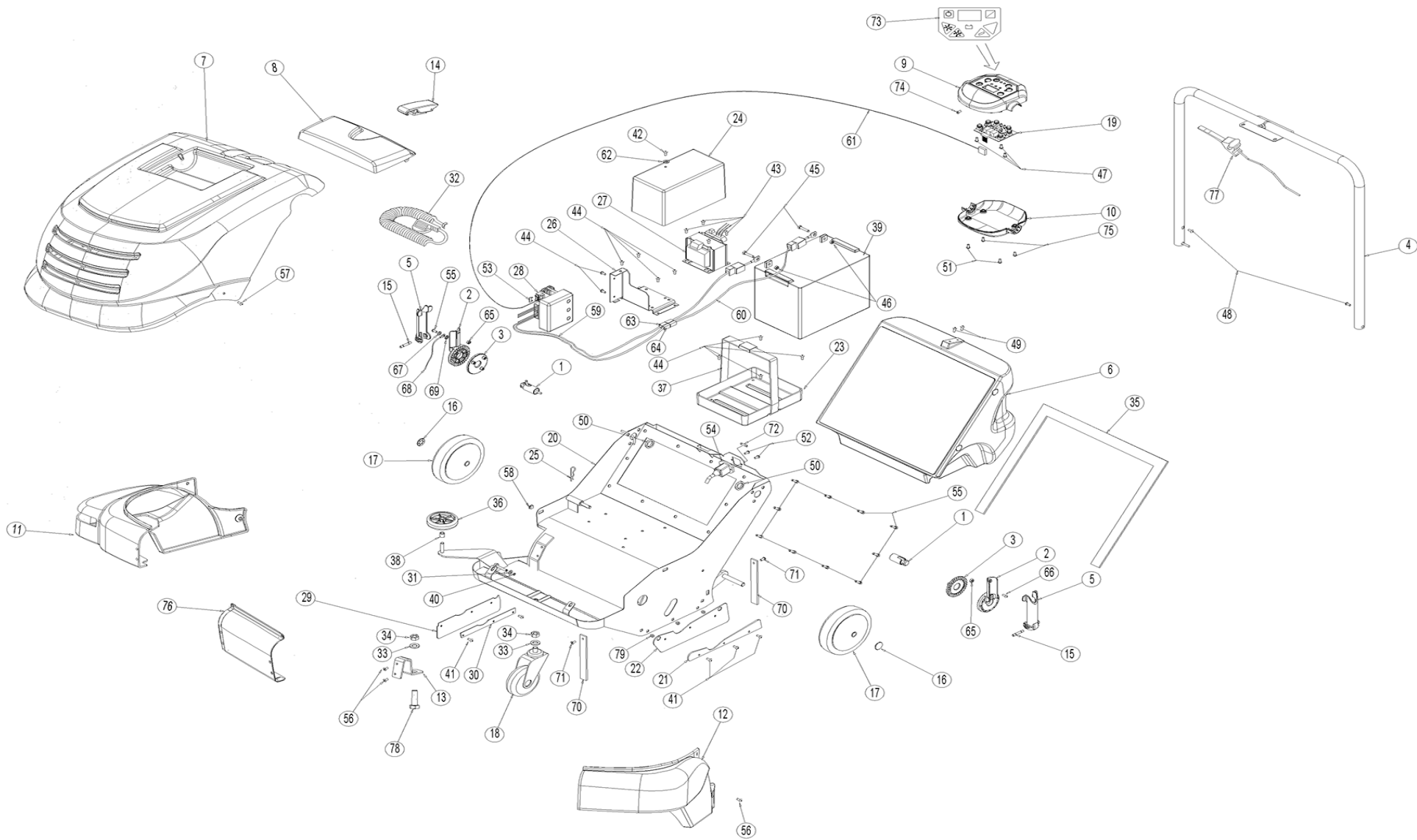
Ref.	Part N.	Alt. Part N.	Description	Quantity	Validity From	Validity To
86	3CMCV02396		REGISTER 8X6MAX30	1		
87	3MLML00033		SPRING FLAP LIFT	1		
88	3VTDD00492		NUT NYL DIN 982 M8	1		
89	3LAFN07438		BRACKET FLAP LIFT 664	1		
90	3VTRS36062		WASHER D. 8	3		
91	3MPVR05453		FLAP FRONT RUBBER 664	1		
92	3VTVT08011		SCREW HH M5X12 DIN 7500	3		
93	3CMCV34027		BARREL COUPLER 14X17 M5	3		
94	3LAFN06709		ROD 664	1		
95	3VTVT00446		SCREW HH UNI 5739 8X20	1		
96	3VTRS00504		WASHER D.8 ZC UNI 6592	2		
97	3LAFN34955		LEVER FLAP	1		
98	3LAFN07372		CAP PROTECTION BEARING 464 SS	1		
99	3LAFN07183		FLAP RETAINER	1		
100	3VTVT00005		SCREW HH 5X12 ZC	6		
101	3GUGO00414		GASKET SHAKER FRAME	2		
102	3VTAE13511		CIRCLIP D.10 UNI 7435	1		

FRAME



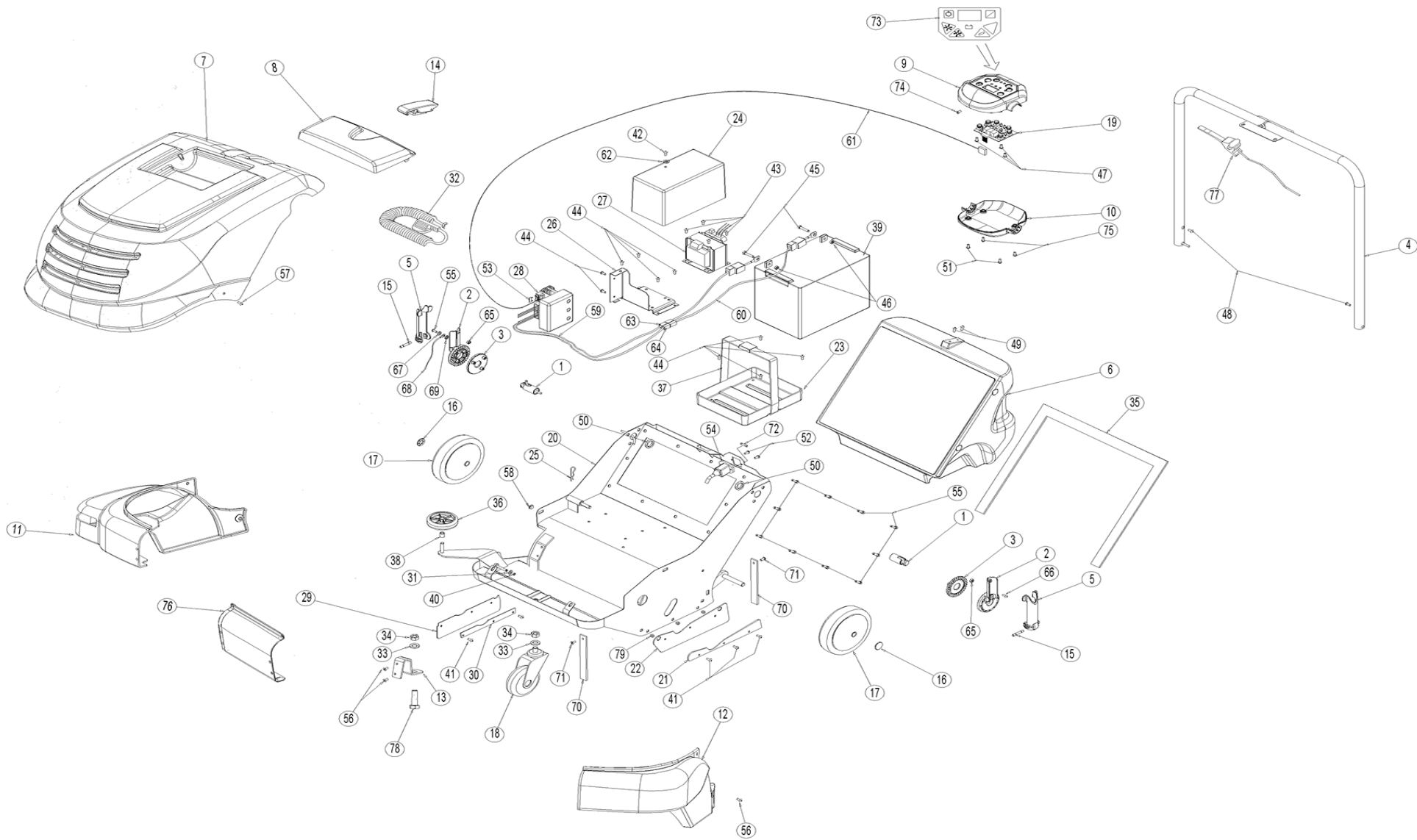
Ref.	Part N.	Alt. Part N.	Description	Quantity	Validity From	Validity To
1	LAFN01223		PIN HANDLE ROTATION	2		
2	MPVR00914		CLAMP -SERRATED HANDLE L	2		
3	MPVR00915		PAD SERRATED HANDLE LOC	2		
4	LAFN06714		HANDLE 664	1		
5	MPVR00917		LEVER LOCK HANDLE	2		
6	MPVR05319		REAR HOPPER 664	1		
7	MPVR05890		GREEN HOOD FOR 664	1		
8	MPVR05889		COVER 464 GREEN	1		
9	MPVR00926		INSTRUMENT PANEL HOUSING - UPPER	1		
10	MPVR00927		INSTRUMENT PANEL HOUSING - LOWER	1		
11	MPVR05157		COVER 464 RIGHT SIDE GRAY	1		
12	MPVR05158		COVER 464 LEFT SIDE GRAY	1		
13	LAFN06806		BRACKET	2		
14	MPVR00902		LATCH HOPPER	1		
15	LAFN01237		PIN LEVER LOCK HANDLE	2		
16	VTVR00305		STARLOCK WASHER CAPPED D.12	2		
17	RTRT00039		WHEEL REAR 464-664	2		
18	RTRT00040		WHEEL FRONT 464-664	1		
19	MECE00020		BOARD DISPLAY 464-664	1		
20	LAFN07435		FRAME 664	1		
21	LAFN01235		PLATE SKIRT -LEFT SIDE	1		
22	MPVR00938		PLATE SKIRT- RIGHT SIDE	1		
23	MPVR04649		CONTAINER BATTERY 60A	1		
24	MPVR05105		ELECTRONICS COVER	1		
25	VTVR47052		SPLIT PIN	1		
26	LAFN01236		SUPPORT POWER BOARD	1		
27	MECE00408		TRANSFORMER FOR BATTERY CHARGER 115V	1		
28	MECE00025		PCB CONTROL BOARD/CHARGER	1		
29	MPVR00937		FLAP RIGHT SIDE 464	1		

FRAME



Ref.	Part N.	Alt. Part N.	Description	Quantity	Validity From	Validity To
30	LAFN01234		PLATE SKIRT-RIGHT SIDE	1		
31	VTRS00011		WASHER UNI 6592 6X12 ZC	1		
32	MECB00923		CHARGER CORD ONBOARD	1		
33	VTRS86510		WASHER UNI 6592 12X24 ZC	1		
34	VTDD00012		NUT NYL DIN 985 M12 ZC	1		
35	MPVR05353		KIT FOAM 664	1		
36	RTRT00011		WHEEL BUMPER D.150	1		
37	MTCG00011		BELT FOR BATTERY	1		
38	LAFN75911		SPACER D.12 H.7	1		
39	19406		BATTERY 12V 42AH/20H AGM	1		
40	VTAE48552		CIRCLIP DIN 471 D.6	1		
41	VTVT00106		SCREW STS 3,5X14,5	5		17/07/2008
41	VTVT00800		SCREW SHCS 4X12 ZC	5	18/07/2008	
42	VTVT00003		SCREW HH M4X12 ZC UNI 5739	1		
43	VTVT72043		SCREW UNI 7687 4X16 ZB	4		
44	VTVT00003		SCREW HH M4X12 ZC UNI 5739	10		
45	VTVT00104		SCREW HH UNI 5739 6X18 ZC	2		
46	VTDD00482		NUT M6 ZC UNI 5588	2		
47	VTVT00098		SCREW STS UNI 6954 3,9X9,5	3		
48	VTVT00993		SCREW STS UNI 8112	2		
49	VTVT00075		SCREW UNI 5933 5X20 ZC	2		
50	LAFN06270		RING NUT	2		
51	VTVT14062		SCREW HH UNI 5739 5X16 ZC	2		
52	VTVT01353		SCREW SH-CSK UNI 5933 3X8 ZC	2		24/05/2016
52	VTVT00329		SCREW	2	25/05/2016	
53	MEVR00039		FUSE 20A	1		
54	MEVR01930		RECEPTACLE CHARGER FUSED	1		
55	VTVT83145		SCREW SH-CSK UNI 5933 5X15 ZC	11		
56	VTVT75726		SCREW SHCS ISO 7380 6X16 ZC	4		

FRAME



Ref.	Part N.	Alt. Part N.	Description	Quantity	Validity From	Validity To
57	VTVT09916		SCREW SHCS ISO 7380 6X20 ZC	2		
58	VTDD00501		NUT M6 SQUARE CLIP	4		
59	MECE00026		CHARGER WIRE HARNESS	1		
60	MECB00924		WIRING BATTERY CONNECTION W/CAPS	1		
61	MECE00023		CABLE PCB DISPLAY	1		
62	VTRS15959		WASHER UNI 6593 4X12X1,5 ZC	1		
63	MEVR00082		CONNECTOR PP75 BLACK	1		
64	MEVR00083		CONNECTOR PP75 RED	1		
65	VTDD00017		NUT NYL DIN 985 M5	2		
66	VTVT05726		SCREW M5X12 SH-CSK ZC UNI5933	1		
67	VTRS00010		WASHER UNI 6592 5X10 ZC	1		
68	MECB00971		WIRING ASSEMBLY	1		
69	VTRS03924		WASHER D. 5 DIN 6798E	1		
70	MPVR04693		RUBBER STRAP CONDUCTIVE	2		
71	VTVT62920		SCREW HH 6X16 ZC	2		
72	MEVR00150		FUSE 2.5 A 250V 5X20	1		18/03/2010
72	MEVR01986		FUSE 2.5 A 250V 5X20	1	19/03/2010	
73	ETET00146		LABEL CONTROL PANEL	1		
74	VTVT00724		SCREW	1		
75	VTVT00892		SCREW 4X16 UNI9707	2		
76	MPVR05321		SIDE PANEL 664	1		
77	MPVR05345		HANDLE 664	1		
78	VTVT00375		SCREW HH M12X35	2		
79	VTVR47015		INSERT PLASTIC	5		

Dustbane Customer Support

Mailing Address

25 Pickering Place
Ottawa, ON K1G 5P4
Canada

Phone

1-800-387-8226

Email

General Inquiries: info@dustbane.ca
Technical Inquiries: techsupport@dustbane.ca

Website

www.dustbane.ca

Support à la clientèle Dustbane

Adresse postale

25 place Pickering
Ottawa, ON K1G 5P4
Canada

Téléphone

1-800-387-8226

Courriel

Demandes générales : info@dustbane.ca
Demandes techniques : techsupport@dustbane.ca

Site web

www.dustbane.ca



GIVE meaning
TO YOUR cleaning™

Un impact
PLUS GRAND EN
nettoyant^{MC}